

Two designs for different lifestyles: A sporty flush-deck layout for safety, freedom of movement and comfort in regatta, and a raised saloon one with large panoramic and luminous windows, for a better living interior space



Solaris **74**

Blue water sailing at its best. A new entry, closing the gap between the 68RS and the 80RS

ED/RS

43

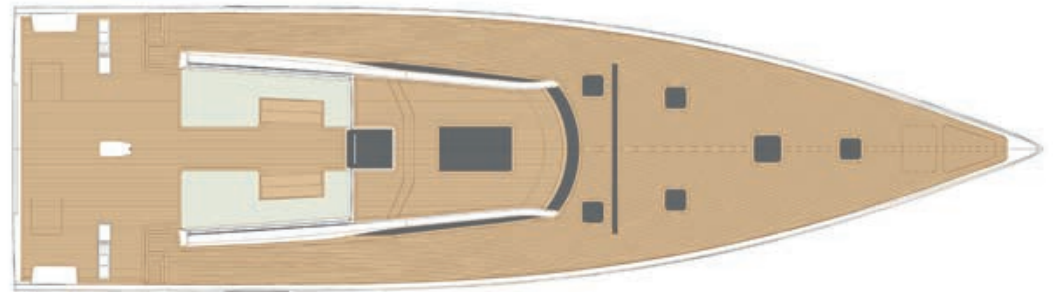
74



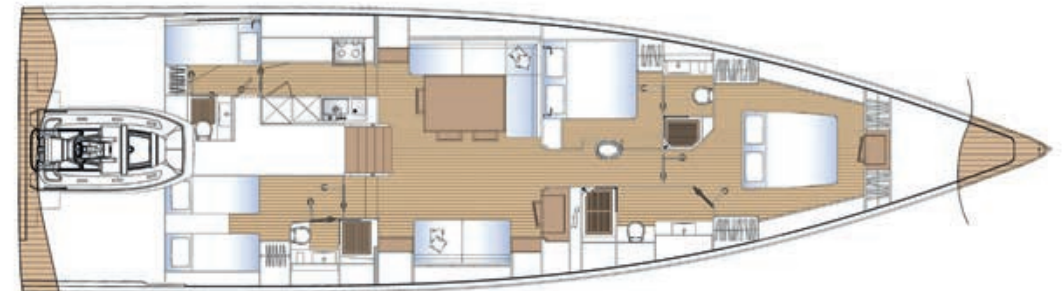
SOLARIS 74 FD/RS

LOA	22.00	M
LWL	20.68	M
BEAM	6.10	M
DRAFT	3.50 - (2.90 OPTIONAL)	M
DISPLACEMENT	LIGHT - 38,500	Kg
BALLAST	10,500	Kg
SAIL AREA	290	M ²
MAINSAIL	148	M2
JIB 106%	142	M2
ENGINE	150 (175 OR 180 OPTIONAL)	HP
WATERTANK	1,200	L
FUEL TANK	1,000	L
CE CERTIFICATION	OPEN SEA CATEGORY A	
DESIGNER	JAVIER SOTO ACEBAL	
INTERIOR DESIGNER	SOLARIS DESIGN TEAM	
STRUCTURAL	SOLARIS DESIGN TEAM	

FD DECK PLAN

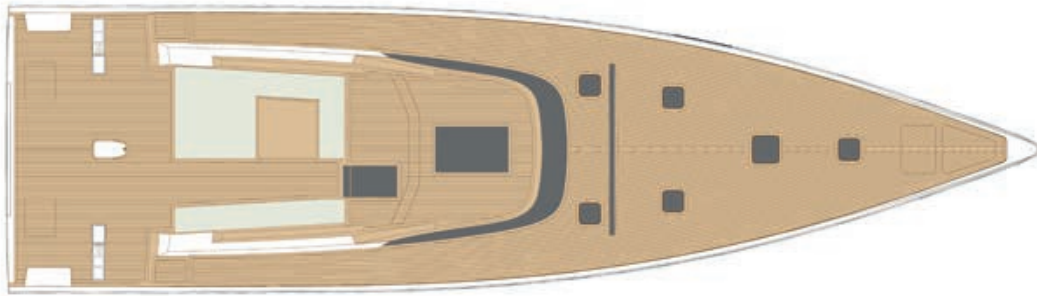


FD INTERIOR PLAN RS





RS DECK PLAN



RS INTERIOR PLAN RS



- More layouts possible
- Steering with very good visibility
- Perfect access to water